



Curwen Primary School
Together Everyone Achieves More

WELCOME TO YEAR 6

Are we going on any trips?

What are we learning about this year?

Welcome back

When are we doing PE?



What is the name of your teacher?



Introductions

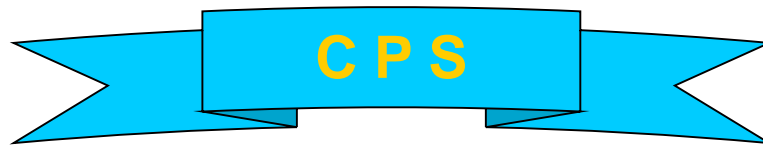
*The members of staff who will be working in **Year 6** this year are:*

Assistant Head: **Julie Horsington**

Head of Year: **Kathryn Hurst**

Teachers: **Mrs Hurst, Mr Uddin, Mrs Clements and Mr Burrows**

Support staff: **Mrs Taylor, Ms Carter, Miss Forrest, Mr Hearn, Mr Cameron and Mrs Roberts**



Curwen's Management Team

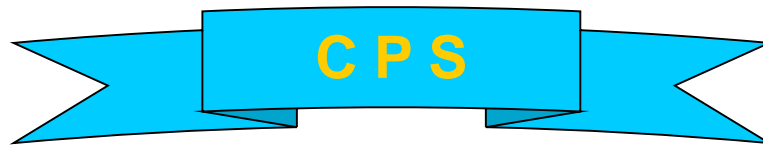
Each year group has a Year Group Leader. For year 6 this is **Mrs Hurst**

Each Year Group has an Assistant Head Teacher responsible for the phase. For year 6 this is **Ms Horsington**

We also have an Assistant Head Teacher responsible for Safeguarding: **Ms Sandhu**

We have a Deputy Head Teacher: **Ms White**
Mrs Mansfield is the Head of School.

Mr Harris is the Executive Head Teacher, and works across the Tapscott Learning Trust.



Safeguard & Pastoral Team



Safeguarding Team

Mandy Sandhu – Designated Safeguarding Lead / Safeguarding & Child Protection

Tyrone Cameron – Assistant Designated Safeguarding Lead/ Pastoral Team Lead

Claire Twatchman- Family & Behaviour / Support Worker

Pearl O'Hanlon- Family & Behaviour / Support Worker

Rory Cullen - Family & Behaviour / Support Worker



Arriving at School

We are having soft openings and closings to minimise the number of people in the playground.

The gates will be open at **8.45** am and close at **8.55** am everyday, any children who are late should wait with a parent/carer outside the main office until your child/ren can be escorted to their class.

If you want to come to Breakfast Club it is from 7.45 - 8.30am everyday and costs 80p. (Children will not be admitted after 8.30am). Entrance to breakfast club is via the main office.



Collecting your child

You can collect your children from their classrooms between 3:10-3:20pm. After this time, you are late.

The playground gates will be closed at 3:20pm.

If your child is collected after 3:30pm you maybe charged a late fee.

PLEASE PHONE THE OFFICE AS SOON AS YOU KNOW YOU ARE GOING TO BE LATE COLLECTING YOUR CHILD.



Collecting your child - safety at the classroom door

Please be patient with teachers and staff whilst we get to know your faces at the end of the day.

We want to make sure that the children are sent home safely, so please be patient. The teacher may be speaking to a parent, so it may take a minute or 2 to dismiss your child.



Please stand back from the yellow arches to give children space to come out of the classrooms.

**PLEASE PHONE THE OFFICE
IF SOMEONE DIFFERENT IS
COLLECTING YOUR CHILD AT
THE END OF THE DAY**



After school childcare provision

After school we have a **6 o'clock club**. This runs Monday to Friday and is open to anyone.

The cost is **£10 per day** and children are supervised by members of school staff.

This club is flexible - some children stay all week but others only stay on certain days but this must be booked in advance.

Please speak to a member of the office staff if you would like more information about **6 o'clock club**.



Clubs - extra curricular activities

Pre-COVID we offered lots of after school clubs for your children which ran from 3:15 to 4:30.

We hope to be able to start running after school clubs again in the coming weeks and we will be writing to you with information about this in the next couple of days.



Clubs - continued....

There will be 2 types of clubs after school

- (1) Invite clubs - these are additional learning support sessions delivered after school for specific children. School staff decide on who needs to attend these. **Starting end of September.**

- (2) Extra-curricular activities e.g. cooking, art, sports, gymnastics - some of these will **be paid for** activities. Open to all children. **Starting after the Half Term Holiday.**



Pre order on school money

Uniform

- **Dark Grey or Navy** skirt, pinafore dress, tailored trousers, or tailored shorts
 - **NO** leggings, joggers, jeggings or jeans & **White**, **Black** or **Grey** socks/tights
 - **Navy Blue** jumper or cardigan (**NO** hoodies or branded jumpers or P.E. t-shirts)
- Curwen logo jumpers, cardigans and fleeces can be bought at the school office
- **White** shirt (long or short sleeve) or **White** polo shirt
 - **Blue** Summer Dress
 - **Hairbands/bobbles** - Plain **blue**, **black** or **white** not too big

Footwear: Shoes or trainers- **NO** open-toed sandals or Heelys
Wellies can be worn but pupils must change into their shoes when inside the school

Any Hijabs- NO pins: White, Navy or Black

P.E. KIT Curwen Blue P.E. t-shirt -Sold at the school

Black joggers, leggings or shorts **Footwear**-comfortable trainers

Jewellery - Only stud earrings and a watch *Pupils will be asked to remove any unsuitable jewellery or hair dressings. The school cannot be held responsible for the loss or damage of these items as a result of this.* **NO** make-up, nail polish or false nails

CPS

Uniform & Clothing



- Uniform and jewellery
 - Name in **every** item of clothing
 - Small, stud earrings only
 - Hair bands must be plain and in school colours only
 - Sensible shoes
- PE Kit (Thursday)
 - Please send your child into school wearing their PE kit and suitable footwear
 - At the moment children will not be changing at school
 - Name in **every** item of clothing
- Lost Property
 - Please encourage your child to put their jumpers/cardigans in their trays or school bags if they take them off
 - All lost property is disposed of at the end of every half term
 - Parents/carers are not permitted in the building to look for lost items



Money

We are now a cash free school.

**ALL payments should be made online through
'School Money' (including uniform)**

Please ensure you keep your online receipts for your records.

Class teachers have been instructed not to take cash or cheques. The only exception to this is charity donations.

**If you need any help setting this up then
please speak to office staff.**

Celebration/birthday treats

We request that parents **do not** send in party bags, sweets or treats for their child's birthday as this becomes very difficult for us to manage in school. They will no longer be given out and will be returned home.

To celebrate children's birthdays, we invite them to wear **non-uniform** when it is their birthday. That way staff know it is their birthday and we can make it a special day for them. If their birthday is a Saturday or Sunday or in the holidays then they can choose whether to celebrate the Friday before or Monday after.





Water bottles

- Please ensure your child brings a water bottle (with water!) each day
- This should be labelled with your child's name and class
- This is important now more than ever as the shared water fountains are currently all out of use



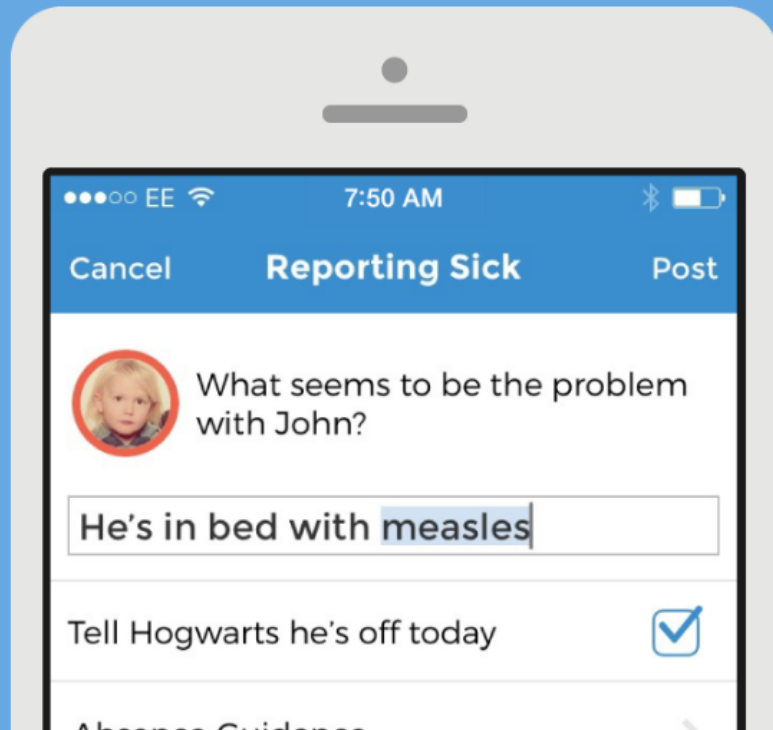
Appointments

- All medical and dental appointments should be arranged **outside** of the school day where possible.
- Where this is not possible, please inform us through Studybugs and provide evidence of the appointment.
- If your child is at an appointment in the morning then they should return to school after it. However, if you cannot get them back to school before 12pm, then they should not come back until 1pm and should have lunch at home.
- **No children will be admitted during the lunch hour 12-1pm.**



Report absences through our app...

Studybugs for Parents and Carers



A better, safer way to report when your child is sick and off school.

With a few quick taps or clicks, you can give your child's school all they need to record absence due to illness.

Get the free mobile app now...



...or register online to use via your web browser:

Register Free!

Already a user? [Sign in here.](#)

...and get useful school info straight to your phone!

If your child is reported absent and we have not heard from you our attendance officer will be conducting home visits



Medical Conditions

Please ensure that all **medical details are up-to-date** – if anything changes, please let us know **immediately** by speaking to the **office**.

All children with asthma should have an **asthma pump permanently in class (make a note of the expiry date so you know when to contact your GP)**. If they require any other prescribed medication, then please bring this to the office **ONLY**.

DO NOT GIVE ANY MEDICATION OR ASTHMA PUMPS TO CLASS TEACHERS OR SEND IT IN YOUR CHILD'S BAG

Throughout the year we will be contacting parents to update care plans. This is a legal requirement to ensure pupils are safe in school.



Medical Conditions

If your child hurts themselves outside of school and it is necessary for them to wear a cast/bandage or have crutches etc, then you must inform us as soon as possible and accompany your child to the **main office** on their first day of return.

Here, staff will help you to complete a temporary health care plan before letting them come into school. This is for their own safety.

Please bring with you any paperwork that you are given from the A & E department or doctors.



Autumn term

Our theme for this term is Local Achievements and we will look at the Elizabethan era including some of Shakespeare's famous works.

Spring term

Our theme for the Spring term is National achievements. We will learn about WWII, including the Windsrush generation and their impact on our country.

Summer term

Our theme for the Summer term is Our achievements. We will focus on the lead up to SATs, and the children will learn about how to successfully transition to secondary school.

More curriculum information is available on our website.

Lots of useful curriculum information can be found on our website:



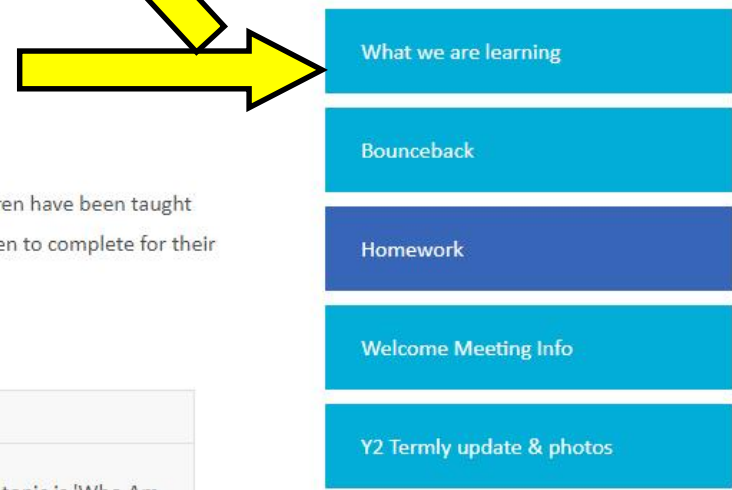
Homework

There will be homework available on this page:

Homework will be uploaded and completed by children on Google Classroom. Until children have been taught how to access and use Google Classroom, we will be uploading online activities for children to complete for their homework.

Homework - Friday 18th September 2020

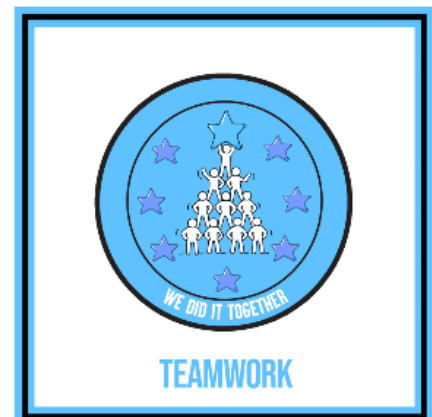
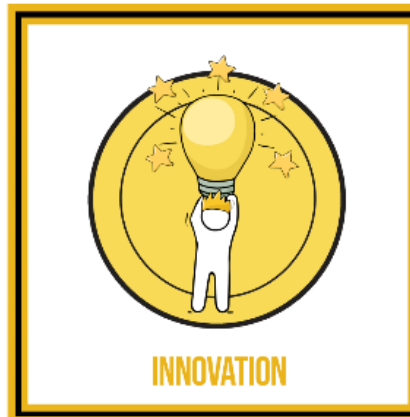
English	Math	Topic
Reading: Read Fun Festivals on Bug Club. Complete the activities/ questions on the first and last	In Maths we have been learning about place value. Practice reading numbers with your child.	Our new topic is 'Who Am I'? Talk to your child about where they and/or other



CPS

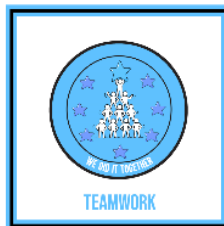


Curwen's Core Skills



Curwen's Core Skills are a set of problem solving skills selected by the staff at Curwen to support the development of our pupils interpersonal skills and give pupils the skills they need to begin to find solutions to their problems.

Curwen's Core Skills



Provisional



But are we going on any trips?

We hope to be going on educational trips once more to support our learning. However, this will be dependent on government COVID restrictions.

These will include:

Autumn -

The South Bank

Spring -

Chislehurst Caves, Fair Play House

Summer -

Swimming, LEGOLAND, cinema, Nandos, Natural History Museum, Church

The trip form that went out this week gives permission for your children to attend all of these trips. Reminder slips will be sent home beforehand.

What is our weekly timetable?

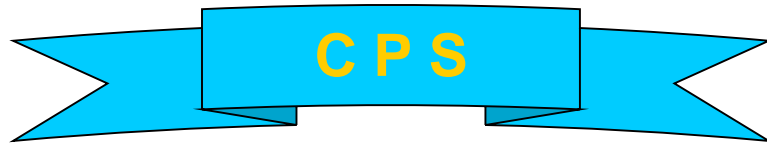


Curwen Primary School

Together Everyone Achieves More

Class: Year 6

	8:45 - 8:55	8:55 - 10:30	10:30 - 10:45	10:45 - 11:00	11:00 - 12:00	12:00 - 1:00	1:00 - 3:00		3:00 - 3:10	3:10 - 3:20	
						LUNCH TIME	1:00-2:00	2:00-3:00			
Mon	Soft opening - holding activities e.g. handwriting, times tables, spelling games, vocabulary building etc.	Literacy	BREAK TIME - yr 3/4 and 5/6 playground	Phase Assembly Via Zoom	Maths		Science - 6H and 6U	Music - 6B RE - 6C	Music - 6C RE - 6B	Class teacher to read to your class - same book as literacy	Soft closing - holding activities e.g. handwriting, times tables, spelling games, vocabulary building etc.
Tue		Literacy		Class Assembly	Maths		Science - 6B and 6C	Music - 6H RE - 6U	Music - 6U RE - 6H		
Wed		Literacy		Class Assembly	Maths		1:00 - 2:30 History (the Elizabethan Era) 2:30 - 3:00 PSHE	2:30 - 3:00 PSHE			
Thur		Literacy		Class Assembly	Maths		Year 6 = PPA (PE)				
Fri		Literacy		BREAK TIME	Maths		1:00 - 2:10 Computing	2:10 - 2:30 Golden Time	2:30 - 3:00 Whole school assembly via Zoom		



RSE (Relationship & Sex Education)

J

Relationship and Health education was made mandatory for all primary schools to teach from spring 2020. It will be delivered through the school's PSHE (personal, social, health and economic education) curriculum.

Our curriculum was designed in consultation with Parents and is now in place from September 2021.

More information will follow this meeting for those that wish to find out more.



Year 6 SATs

- Government requirement
- Tests include: reading, grammar, spelling, maths arithmetic and two maths reasoning papers
- They will take place the week commencing 9th May - please do NOT take any family holidays this week!
- Children will be encouraged to do their best, but please do not panic about these and do not put unnecessary stress onto your children.



Homework

All homework will be put online onto your Child's Google Classroom account each Thursday or Friday. There will be a literacy task, a maths task and sometimes a topic project.

This will usually be revision of topics that have been covered in class that week.

Please speak to your child's class teacher if you are having any problems with this.



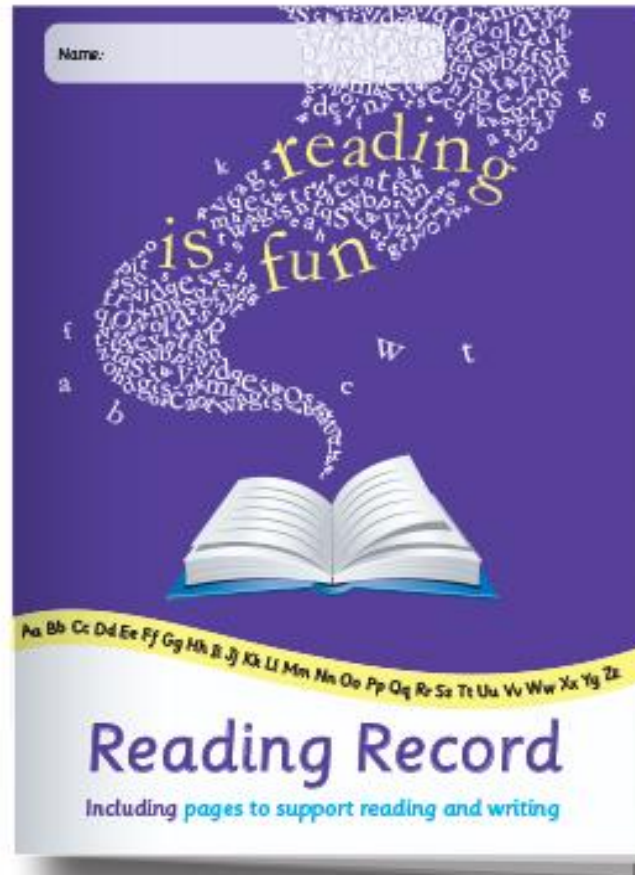
Reading

- In **Year 6** we expect pupils to be reading for at least 20-30 minutes (4 times per week minimum) to help pupils build on their fluency and enjoyment in reading.
- Children should have been given a book by their teacher which they will be able to read independently. They can also select either a fiction and a non-fiction book from the school library.
- Year 6's library day is on a Wednesday every other week.
- **Please ensure books are placed in their book bags for these days.**
- Reading book changing will take place when your child has finished their reading book.



Home learning

Reading Record



To be completed DAILY with a sentence written by **the children** about what they have read that day.



Online Home learning

(1) Bug Club

- An online reading & phonics resource
- Available for children to use at home and in school
- Login, username and school password will be sent out very soon.
- If you ever misplace your logins please send us a message directly on studybugs.



Online Home learning 2

(2) Times Tables Rock stars

<https://ttrockstars.com/>

(3) Espresso (learning platform/all subjects)

★ PUPIL LOGIN DETAILS ★

Curwen Primary School

Username: student20621

Password: cur123

Log in at:

www.discoveryeducation.co.uk



Online Home learning

(4) Google Classroom is here....

- All children in Year 5 and 6 are very proficient in using Google Classroom.
- Children's homework will be placed on this learning platform. They will also use it in school lessons.
- This is an interactive online platform for learning which allows teachers to create learning opportunities and to give brief feedback.
- **Please do not message staff on this facility**



INTERNET SAFETY

In class we have displayed three main rules to stay safe online:

- Don't share personal information
- Don't communicate with strangers
- Tell a trusted adult if you are worried about something

Stranger Danger applies online!!!!



If you are ever concerned about accessing information online or have any questions about internet safety, you can speak to your class teacher or the ICT co-ordinator (Mr Woolstencroft).

There are several websites offering help and advice about how to stay safe online. Just search 'e-safety', e.g.

<https://www.thinkuknow.co.uk/>

A screenshot of the CEOP's Thinkuknow website. The header says 'Welcome to CEOP's Thinkuknow'. Below the header is a paragraph of text: 'Come in to find the latest information on the sites you like to visit, mobiles and new technology. Find out what's good, what's not and what you can do about it. If you look after young people there's an area for you too - with resources you can use in the classroom or at home. Most importantly, there's also a place which anyone can use to report if they feel uncomfortable or worried about someone they are chatting to online. All the information here is brought to you by the team at the NCA's CEOP Command. We hope you like it!'. Below this is a section titled 'Are you...' with six colored buttons: '5-7?' (blue), '8-10?' (yellow), 'Parent/Carer?' (pink), '11-13?' (green), '14+?' (yellow), and 'Teacher/Trainer?' (grey).



INTERNET SAFETY

Online Gaming

Is the content age appropriate?

Fortnite PGI=12 years old

RoadBlox=7 years old

Hello Neighbour PGI=13 years old



Lots of games have communication facilities that allow strangers to contact your child. Do you know who your child is 'chatting' to?



How can you support your child's learning?

- Homework
- Reading records - discussing the text with your child and asking them questions
- Handwriting
- BUG Club & other online learning
- Practising times tables
- Come wearing P.E. KIT each Thursday
- Participate in any parent opportunities (virtual for now)
- Talking about their experiences



Well-being



At the end of the school day, your children have lots to share with you. They may have stickers, they may have learned something really exciting they'd like to tell you about!

Please, leave your phones in your pockets for 10 minutes while you greet your child.

And please don't be offended if we don't let your child out until you have finished your call.



When collecting your children, please welcome them with a smile, not a mobile phone.

This ensures teachers can quickly and safely hand over children and relay any messages.

Please remember to inform the office as well as the class teacher of any changes in the collection of your child.

N  **PHONE
ZONE**

Provisional



2021-2022 Big Events @ Curwen

- Jeans for genes – 17th September (50p charity donation)
 - Parents' Evening – 19th & 20th October (via Zoom)
 - Early Reading and Phonics workshop –TBC
 - Children in Need (dress in something spotty) – 12th November
 - Christmas Concert - TBC
 - World Book Day – 3rd March
 - Parents' Evening – 9th & 10th February (in school)
 - International Family Week Starts – 21st-25th March with Carnival TBC
 - Easter Bonnet Parade - TBC
 - Family Week Starts - TBC
 - Summer Concert - TBC
- Sports Day TBC



Keeping in touch...

Please download Studybugs, the school app and check our weekly newsletter (online).



Members of school staff are on duty before and after school every day.

Attend virtual meetings for parents and workshops. Keep checking the newsletter for more information.

Contact the office to arrange conversations with class teachers via phone if needed. You will be called back when the teacher is not teaching.



How to find out what's going on...

- School newsletter (sent via App/paper copies from office)
- School News App School website
- 'What we are learning' leaflet (termly)
- Check your child's school bag for letters
- Window notices
- Notice boards
- Speaking to staff before and after school
- Telephone/visit the school office

Secondary School

- Sadly, this year will be your child's last at Curwen
- This means they will be venturing out into the big wide world and starting secondary school
- We know that this can be a difficult and often stressful time for both parents and children
- Please try not to panic!

London Borough of Newham's autumn 2021 composite prospectus



Newham London

**WE ARE GOING TO
SECONDARY SCHOOL.**

**WE ARE
NEWHAM.**

Year 7 admissions in September 2022.
Information relating to Pan London Year 7 co-ordination and
In Year admissions for 2021/2022.

People of the Street
at Everything We Do



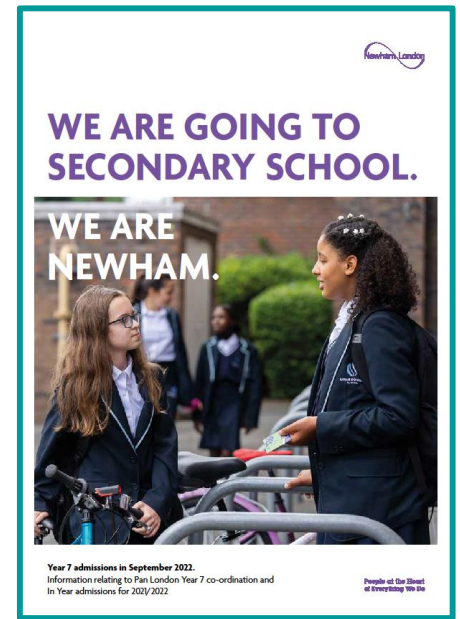
Newham London

**WE ARE GOING TO
SECONDARY SCHOOL.**

**WE ARE
NEWHAM.**

Year 7 admissions in September 2022.
Information relating to Pan London Year 7 co-ordination and
In Year admissions for 2021/2022.

People of the Street
at Everything We Do



Newham London

**WE ARE GOING TO
SECONDARY SCHOOL.**

**WE ARE
NEWHAM.**

Year 7 admissions in September 2022.
Information relating to Pan London Year 7 co-ordination and
In Year admissions for 2021/2022.

People of the Street
at Everything We Do

Brought home this
week

NATIONAL CLOSING DAY

IMPORTANT DATE!!!!

Add a reminder to your phone, calendar or diary at least 3 days before!



2021



National closing date for on time applications

Sunday 31 October 2021



Pan London co-ordination



Pan London application process

All families living in London and many of the Home Counties will be applying through the Pan London co-ordinated application and offer process.

This means parents/carers need to think about all schools they are considering applying for both in Newham and out of Newham.

- All parents/carers must apply through their home local authority (where you live), even where their child attends an out borough primary.
- If parents/carers are considering schools outside of Newham they need to follow the same process as they would for schools in Newham.
- Where parents/carers are considering multiple schools outside of Newham we strongly recommend they use some preferences to name local schools.

Popular oversubscribed schools

In every local authority some schools are extremely popular and have a large population surrounding the school.

For many schools there are at least three applications applying for every place available. This means not every child whose family applies will be able to be offered a place.

Before naming any school as a preference, especially those that are popular you should check to determine the likelihood of your child being offered a place.

Check the 'We are going to secondary school' guide and visit School Finder

<https://www.newham.gov.uk/homepage/171/secondary-school-fact-finder>

It is not possible to guarantee that offers will be made the same every year but data shows they are usually very similar.

Important do's

Deciding on your school preferences is a challenge but remember there are many reliable information sources available to parent and carers to help decide your school preferences:

- Open days and open evenings
- Online virtual school tours
- Schools websites
- Ofsted reports – remember to check the date
- Family and close friends
- Newham's School finder: to calculate home to school distances
- Oversubscription criteria: to determine a child's priority
- Last year's offer tables: see - We Are Starting Secondary School)



Your child's primary school!

Applications can be made using any device or a paper form



How to apply using the eAdmissions portal

Slides on the applications process are available on the Newham website

[How to register for eAdmissions – step by step process \(PowerPoint\)](#)

All primary schools in Newham provide advice and support to families who cannot access the internet or just need help with the process.



National Closing Day

31st October 2021

If you apply after this date your application will be processed as late!

Remember by law late applicants can only be offered the places remaining after the on-time applicants have been given their schools



What happens next?

Once your application has been successfully submitted through the eAdmissions portal an application reference will be issued which will look like this.

316-2022-09-E-001234

Families then need to wait until national offer day 1 March 2022





And finally...

Thank you all for listening.

With your support, we hope that Year 6 will be a memorable and successful year for our children.

If ever, you have any concerns or would like to discuss anything regarding your child, please don't hesitate to ask.

If you contact the office, they will gladly arrange an appointment by phone.

Together **E**veryone **A**chieves **M**ore!



Any questions?

