

Fair Play House 2026

12th - 14th January
6T and 6W

14th - 16th January
6G and 6K

Quotes from children...

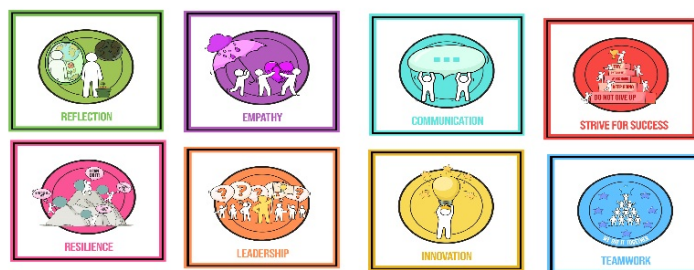
Fair Play House has taught me to try new things no matter how hard or difficult they may be.

Since my trip to FPH I feel more confident in myself.

Being at Fair Play House made me realise how much my mummy and Daddy do for me and that I should be grateful for that and help them more at home.

You have the opportunity to attend a residential trip in January.

The purpose of this trip is to support the outdoor pursuits section of the PE curriculum, developing children's skills in different areas, especially the Curwen Core Skills.



The trip will take place Monday-Wednesday (6T and 6W) or a Wednesday-Friday (6G and 6K).

Arrive at school on _____ either _____ between
8:45-8:55am

Monday 12th
January
6T and 6W

Wednesday
14th January
6G and 6K

Wear non-school uniform clothes e.g. tracksuit bottoms, t-shirt and jumper - not jeans as they take a long time to dry if they get wet.

When you arrive at school you will be directed where to put your bags by members of staff - usually 5/6 dinner hall.

If you usually come to breakfast club, you can still do this on that morning.

At about 9:30 (Monday morning) or 10:00am (Wednesday morning) a coach will arrive. It will have seat belts. You will drag / carry your own bags to the coach and give them to the coach driver who will put them on the coach. For the journey you may bring a book or a fidget toy, but no electronics.



Lost / stolen / broken - no time anyway, 3 day break from TV, video games etc.

Fairplay House



After about 60 mins the coach will arrive at Fair Play House, Maldon, Essex. It is an old manor house with separate sleeping areas for girls and boys.

The coach will drive up the drive to Fair Play House and stop just short of the house (as there is a low tunnel it can't get through.) You will have to carry / drag your bags for about a minute up this path.

Once we arrive at the house you will be met by the staff, put your bags in the hall way and be taken into the lounge area to be spoken to. Rules will be gone over and the staff introduced.



You will be shown how to make your beds and shown where your rooms are and will take your cases / bags to your rooms to unpack and make your beds.

NEW!!!

You are required to bring a sleeping bag with you. A sheet and pillow will be provided.



**Rooms: Between 4 and 8 children in a room.
Children will be with at least one friend.**

You will then have a buffet lunch - this is the only time the tables will be set for you, the rest of the week you will do it yourselves. Whatever you take, they must eat.

After lunch you will help wash up, dry up and tidy up. You will get warm clothes on and do your 1st activity.



Food: All Halal. Children pick what they want in the morning.
Make own packed lunch each day, pick own breakfast.

4 Activities...



High Ropes

G3 Swing



Woodland games



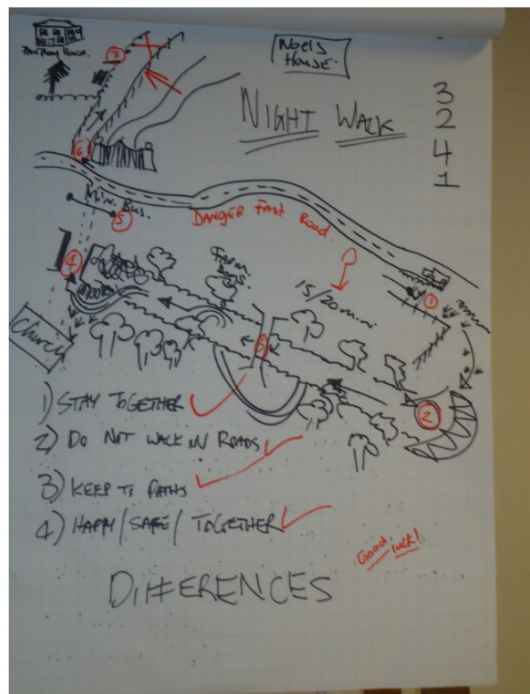
Caving



After you have finished your first activity you will come back to the house, wash your hands, get changed and set up the dining room for dinner.



After dinner you will tidy up, sweep up, wash up. Then you will be shown the route for the night walk and we'll go on the night walk.



WARM clothes, wellies (flood last year), torch.

Muddy clothes = CARRIER BAGS!!

After the night walk you will come back, have a shower, get into their pyjamas, have hot chocolate and a biscuit, brush your teeth and go to bed.



Next day...

Up at 7:30am. Get dressed, tidy rooms, set up for breakfast.

8:00am - Eat breakfast, tidy up and wash up and set up for lunch. Go to rooms, get into WARM clothes, do activity.



Come back and have lunch. After lunch you will wash up, tidy up and get ready for your next activity. You will then do the next activity.



After the second activity you will come back, wash your hands, get changed and lay the tables for tea.

After tea you will have a bit of free time. There are 2 classrooms, we will be able to draw / paint / play pool / table tennis / table football / play board games and chill out.



Movie night

At about 9:00pm you will get ready for bed, have hot chocolate and a biscuit, brush your teeth and go to bed.



On your last night, you'll have a chance to buy something from the shop £5-10 spends is more than enough!

Then the day repeats, but instead of tidying your rooms you have to pack your bags, strip your beds and move your bags into the classrooms so your bedrooms can be tidied ready for the next group to come in.

After the first activity, we come back to the house and have lunch, then the children get their bags, go to the coach and we return to school by 3:00pm.

Your parents will pick you up at the normal time on Wednesday/ Friday (depending which group they're in) from the normal place you are dismissed from. We suggest you do NOT attend clubs on Wednesday/Friday as you will be tired and that if possible, someone comes to pick you up, but you can go home alone if this is not possible.



RULES!!!!!!!!!!!!!!

- NO electronic equipment (phones, ipads, iPhones, Switches, Play Stations etc.)
- NO mobile phones - more homesick, more items to lose / get broken
- NO food / chewing gum / fizzy drinks
- Money: Between £5 and £10 is fine, however this needs to be in **change (coins)** and not notes. **Children** are responsible for this.

Equipment / Clothing list

SLEEPING BAG!!!!

WARM clothes / LAYERS

Hats, gloves, scarves, lots of pairs of socks!

Towel, toiletries

Jogging bottoms

T-shirts

Long sleeved t-shirts

Jumpers

Brush, shower stuff, deodorant, towel, toothbrush, toothpaste

Pyjamas

Hairbrush

Hairbands

Sanitary protection

Carrier bags

Wellies

Trainers x 2 pairs

Slippers

Coat

Waterproof trousers / coat

**CARRIER
BAGS!!!**

When are you going?

6T and 6W will be attending the trip on Monday 12th January - Wednesday 14th January.

6G and 6K will be attending the trip on Wednesday 14th January - Friday 16th January.

You cannot swap between classes.

Cost

It costs £180 per pupil to go to Fairplay House. As we have space for 120 pupils in Year 6, this is £21,600 in total for all children to attend. However, we are only asking for you to contribute part of this cost, and the school will pay the rest and for the coaches to get there.

Therefore, the trip will **cost £125 per child**. However if you have applied for free school meals and this has been approved then the cost of the trip will be **£62.50**. Payments don't need to be paid in full until **the end of January 2026**.

Children will be given this form today.

Cost

You will be notified when you can start paying via the School Money App and this will tell you how much money you will need to pay. If you think this is incorrect, please contact the school office.

You will be able to pay in installments through School Money to spread out the cost. Ideally, we would prefer any outstanding balances to be paid before the trip, but if this isn't possible please aim to clear these shortly after. If you are having trouble with payments please speak to myself or a member of the office staff.

Trip form

If you would like your child to attend this 3-day, 2-night residential, then please ensure you complete the letter and return it to your child's **class teacher** by **Friday 5th December 2025**.

DO NOT SEND THE FORMS TO THE OFFICE!!!!!!!!!!

FAIRPLAY OUTDOOR EDUCATION CENTRE
Fairplay House | Station Road | Wickham Bishops
Witham | Essex CM8 3JL
Tel No 01621 891213
Email: fairplay.house@newham.gov.uk

Form 3 (2 pages)

INFORMATION AND CONSENT FORM

The safety and welfare of your child is our number one concern. At Fairplay, OEC we are committed to providing a safe environment for all visitors and staff. All staff at Fairplay OEC have approved enhanced Disclosure and Barring Service (DBS) checks in place and all staff have completed Safeguarding Training. The Manager and Deputy Manager are Designated Safeguarding Leads. All instructors are qualified to lead the activities and training is regularly updated. All catering staff hold L2 Food Safety and Allergen Awareness qualifications and all staff at Fairplay have completed First Aid Training. All activities and equipment used is regularly checked.

Please be assured that all of our activities, no matter how adventurous, are also educational, safe and delivered by competent and highly qualified staff with a passion for Outdoor Education. Adventurous activities by their very nature involve an inherent level of risk. Participants and Visit Leaders must be aware, that even after suitable and sufficient risk assessments have been undertaken, there remains a level of residual risk and it is often not practicable to manage the risk to zero.

This form must be completed and signed by the Parent/Guardian of the child named therein.

In signing this form you give the Centre consent for:

- Your child to take part in the full range of activities as requested by the school/group.
- Members of Centre staff to approve such medical treatment for your child as is deemed necessary in an emergency on the advice of a qualified medical practitioner.

STUDENT DETAILS

SCHOOL/GROUP Curwen Group 1 (6A and 6K) DATE OF VISIT 13th – 15th January 2025

NAME OF STUDENT MALE/FEMALE*

HOME ADDRESS

DATE OF BIRTH

MEDICAL INFORMATION

NAME AND ADDRESS OF FAMILY DOCTOR

DR. TELEPHONE NO.

• Does your child suffer from any medical condition? YES / NO* If YES, please give details

• Does your child receive medication? YES / NO*

If YES, please state Name Dosage/Frequency

• Is your child allergic to any medication? YES / NO* If YES, please specify

• Does your child use a salbutamol inhaler (Blue pump)? YES/NO

• Do you agree that your child may, in an emergency, use the Centre's salbutamol inhaler? YES/NO

• When did your child last have a tetanus injection?

Continued on page 2

1

DIETARY INFORMATION

- Please list any food allergens
- Please give details of any special dietary needs
- Has your child been issued by a medical professional an Adrenalin Auto Injector (AAI – sometimes referred to as an Epi-pen)? YES/NO
- Do you agree that your child may, in an emergency, use the Centre's Adrenalin Auto Injector? YES/NO

EMERGENCY DETAILS - PARENT / GUARDIAN CONTACT TELEPHONE NUMBERS

WORK HOME MOBILE

SIGNATURE OF PARENT/GUARDIAN DATE

FULL NAME OF PARENT/GUARDIAN (IN CAPITALS PLEASE)

.....

The highest standard of behaviour will be expected at all times from your son/daughter. Your co-operation with this aim will be very much appreciated.

Please tick box if you are happy that your child's photograph may be used for Fairplay O.E.C publicity.

Please return the completed form to the school

2

This form is very important and needs to be filled out carefully and as accurately as possible



At Fairplay Outdoor Education Centre we inspire and support our children, young people and adults through challenges and new opportunities that provide rich, memorable experiences. We provide safe, inclusive and high quality Outdoor Education with equal access and opportunities for all.

Fairplay OEC offers Day Visits and Residential Visits - Our instructors will work with small groups (no more than 15) of students on a bespoke programme

- GIANT SWING
- ARCHERY
- ZIP WIRE
- HIGH ROPES
- CAVING
- ORIENTEERING
- LOW ROPES
- CLIMBING WALL



For further information please call
01621 891213 or email:
fairplay.house@newham.gov.uk



At Fairplay Outdoor Education Centre we inspire and support our children, young people and adults through challenges and new opportunities that provide rich, memorable experiences. We provide safe, inclusive and high quality Outdoor Education with equal access and opportunities for all.

During their stay with us, your children will follow a programme similar to this:

DAY 1

10.30am/11am - Arrival at Fairplay House

Briefing with the instructors which includes a fire drill, introducing the children to their rooms to unpack, explaining the indoor tasks which need to be done e.g. making beds and tidying up after themselves.

12.30pm - Buffet Lunch

Buffet lunch of meat, tuna, cheese, eggs, a variety of salads, bread/rolls, roasted potatoes, Fresh fruit

2pm - Activity One*

For example, high ropes, zip wire, canoeing, caving, archery, orienteering, woodland games.

4.30pm - Return to Fairplay House

5.30pm - Evening Meal**

For example, pasta bolognese, korma and rice, fish and chips all served with vegetables or salad

7pm - Evening Activity

For example night-walk, orienteering, problem solving

DAY 2

(for a full-week programme day 2 is repeated on days 3 and 4)

8am - Breakfast

Choose from a variety of cereals, fruit juice, toast and something hot e.g. scrambled egg or sausages or beans and preserves

10am - Activity Two*

12.30pm - Lunch

Return to Fairplay House for a packed lunch of filled roll/wrap, crisps, fresh fruit and a slice of cake or biscuit

2pm - Activity Three*

4.30pm - Return to Fairplay House

5.30pm - Evening Meal**

7pm - Evening Activity

For example, Camp Fire, Film Night or Mini Olympics (led by School Staff)

9.30pm - 10pm (approx.) Bedtime

FINAL DAY

8am - Breakfast

Choose from a variety of cereals, fruit juice, toast and something hot e.g. scrambled egg or sausages or beans and preserves

10am - Activity Four*

12.30pm - Lunch

Return to Fairplay House for a packed lunch of filled roll/wrap, crisps, fresh fruit and a slice of cake or biscuit

1/1.30pm - Return Journey

Board coaches for the return journey. We hope everyone has had a wonderful stay with us and we wish them all a safe journey home.

*See Activity One
** See Evening Meal On Day One

A choice of Halal, Non-Halal and Vegetarian options are available at each meal.
More activity examples can be found by scanning the qr code



Any questions?

